



**Product catalogue**



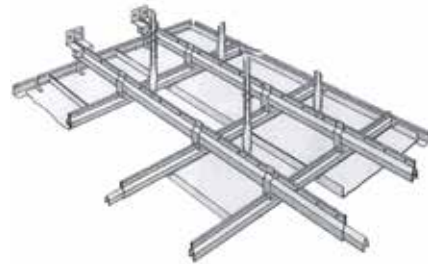


## Sealfast

The Sealfast assortment consists of two lines of ceiling suspension systems: the Nonius system and the Quick Suspension system. The Nonius system is mainly used for sites requiring a rigid ceiling suspension while the Quick Suspension system is used for light and mineral ceiling suspension.

### Nonius system

The Nonius system consists of separate top and bottom parts. These parts are joined by means of a Nonius nail or hairpin spring. The various bottom parts of the Nonius system enable the suspension for a number of ceiling profiles and grids.

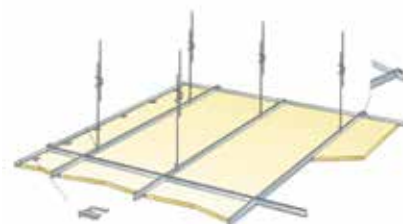


### Quick Suspension system

The Quick Suspension system consists of separate top and bottom wires. These are joined by means of a fast gripping spring. The quick suspension wires are available with a hook or an eye in various lengths. All combinations in lengths are possible with a maximum of 400 cm per wire length. The wires are galvanized and the springs offer higher corrosion resistance by means of Delta Tone surface treatment.

### System 2000

System 2000 is a unique, exclusive Quick Suspension system and can be used in most applications where the standard Quick Suspension systems are used. The unique design of the hook protects the ceiling plates and avoids damage. The exclusive design saves time while there is no need to manually close the hooks like the traditional Quick Suspension system.





- BL: ..... Black
- PL: ..... Plastic
- DT: ..... Delta tone
- ME: ..... Metal
- SS: ..... Stainless steel
- EG: ..... (yellow) galvanized
- EG/DT: ..... Galvanized / delta tone
- EG/PT: ..... Galvanized / painted
- PS: ..... Plain coated steel

**CE** These products comply with the applicable rules within the EU

## Nonius ceiling suspension system **6**



6-9

## Quick hanger system **22**



22-25



26-27



28-30



31

## Ceiling and wall fixings **32**



22-36

## Inspection hatches **38**



38-39

## Accessories **40**



40



41



42

# NONIUS CEILING SUSPENSION SYSTEM

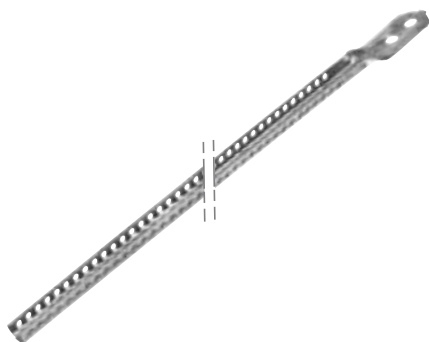
## Nonius top parts

### Description:

Nonius top galvanized, perforated whole length.

### Application:

Suspending ceilings, alcoves, wooden rails etc.



Finish	Arched length (mm)	Total length (mm)	Box (pcs)	Art.nr.
● EG	80	140	100	04-141-360010
● EG	140	200	100	04-141-360020
● EG	240	300	100	04-141-360030
● EG	340	400	100	04-141-360040
● EG	440	500	100	04-141-360050
● EG	540	600	100	04-141-360060
● EG	640	700	100	04-141-360070
● EG	740	800	100	04-141-360080
● EG	840	900	100	04-141-360090
● EG	940	1000	100	04-141-360100
● EG	1040	1100	25	04-141-360110
● EG	1140	1200	25	04-141-360120
● EG	1240	1300	25	04-141-360130
● EG	1340	1400	25	04-141-360140
● EG	1440	1500	25	04-141-360150
● EG	1540	1600	25	04-141-360160
● EG	1640	1700	25	04-141-360170
● EG	1740	1800	25	04-141-360180
● EG	1840	1900	25	04-141-360190
● EG	1940	2000	25	04-141-360200
● EG	2040	2100	25	04-141-360210
● EG	2140	2200	25	04-141-360220
● EG	2240	2300	25	04-141-360230
● EG	2340	2400	25	04-141-360240
● EG	2440	2500	25	04-141-360250
● EG	2540	2600	25	04-141-360260
● EG	2640	2700	25	04-141-360270
● EG	2740	2800	25	04-141-360280
● EG	2840	2900	25	04-141-360290
● EG	2940	3000	25	04-141-360300



## Nonius tops with vibration damper

**Description:**

Nonius top galvanized, perforated with integrated rubber vibration damper.

**Application:**

Vibration damped hanging ceilings alcoves, wooden rails etc.

Finish	Arched length (mm)	Total length (mm)	Box (pcs)	Art.nr.
● EG	100	160	100	04-241-407641
● EG	140	200	100	04-241-407642
● EG	240	300	100	04-241-407643
● EG	340	400	100	04-241-407644
● EG	440	500	100	04-241-407645
● EG	540	600	100	04-241-407646
● EG	640	700	100	04-241-407647
● EG	740	800	100	04-241-407648
● EG	840	900	100	04-241-407649
● EG	940	1000	100	04-241-407650



## Nonius base for T-sections

**Description:**

Nonius onderstuk verzinkt.

**Application:**

Hanging ceiling strip for trunking.

Finish	Total length (mm)	Box (pcs)	Art.nr.
● EG	190	100	04-151-223



## Nonius base for grids

**Description:**

Nonius base plated for grids.

**Application:**

Suspending ceiling grids.

Finish	Total length (mm)	Bandraaster size (mm)	Box (pcs)	Art.nr.
● EG	140	50	100	04-151-235
● EG	140	75	100	04-151-236
● EG	140	100	100	04-151-237
● EG	140	125	100	04-151-238
● EG	140	150	100	04-151-239



# NONIUS CEILING SUSPENSION SYSTEM

## Nonius base for CD60/27

**Description:**

Nonius galvanized base, secured with screws, assured to 40 kg, 25 kg without locking.

**Application:**

Suspending CD60/27 profile.



Finish	Total length (mm)	Box (pcs)	Art.nr.
● EG	70	100	04-151-335

## Nonius base for wood

**Description:**

Nonius base galvanized.

**Application:**

Hanging wooden rails and covers.



Finish	Type	Total length (mm)	Box (pcs)	Art.nr.	Art.nr.
● EG	220	190	100	04-151-361019	

## Nonius base for wood

**Description:**

Nonius base plated, 90° inverted.

**Application:**

Hanging wooden rails and covers.



Finish	Type	Total length (mm)	Box (pcs)	Art.nr.
● EG	221	160	100	04-151-362001

## Nonius base for wood

**Description:**

Nonius base plated, 45° inverted.

**Application:**

Hanging wooden rails and covers.



Finish	Total length (mm)	Box (pcs)	Art.nr.
● EG	180	100	04-151-363001*

\* Possible longer delivery time



## Nonius base for T-profile

**Description:**

Nonius base galvanized.

**Application:**

Suspending a T-profile with a straight back.  
For example, API / CMC / DONN.

Finish	Type	Total length (mm)	Box (pcs)	Art.nr.	Art.nr.
● EG	228	190		100	04-151-364001*



## Nonius base for clamping profile

**Description:**

Nonius base galvanized.

**Application:**

Hanging clamp profile with a rounded back.  
For example, Derako.

Finish	Total length (mm)	Box (pcs)	Art.nr.
● EG	190	100	04-151-365001



## Nonius base for CD60/27

**Description:**

Nonius base plated, 25 kg.

**Application:**

Suspending CD60/27 profile.

Finish	Total length (mm)	Box (pcs)	Art.nr.
● EG	110	100	04-151-367001



## Nonius base for CD60/27

**Description:**

Nonius galvanized base, secured with screws, assured to 40 kg with lock,  
25 kg without locking.

**Application:**

Suspending CD60/27 profile.

Finish	Total length (mm)	Box (pcs)	Art.nr.
● EG	117	100	04-151-407198



# NONIUS CEILING SUSPENSION SYSTEM

## Nonius base for CD60/27

**Description:**

Nonius base galvanized plated, 40 kg without locking.

**Application:**

Suspending CD60/27 profile.



Finish	Total length (mm)	Box (pcs)	Art.nr.
● EG	118	100	04-151-407231*

## Nonius base for CD60/27

**Description:**

Nonius base galvanized bracket for the profile CD60/27.

**Application:**

Suspending CD60/27 profile.



Finish	Total length (mm)	Box (pcs)	Art.nr.
● EG	126	100	04-151-507704

## Nonius extension

**Description:**

Nonius extender galvanized, maximum extension 170 mm.

**Application:**

Extending a nonius top part.



Finish	Total length (mm)	Box (pcs)	Art.nr.
● EG	205	100	04-151-373200

## Nonius connector

**Description:**

Nonius galvanized connector, connect a vernier upper Section with a vernier rod.

**Application:**

Connecting a vernier uppers with a straight vernier rod.



Finish	Total length (mm)	Box (pcs)	Art.nr.
● EG	92	100	04-151-373229

\* Possible longer delivery time

## Nonius rod

**Description:**

Vernier rod galvanized, fully perforated, maximum extension 3000 mm.

**Application:**

Extending a vernier top.

Finish	Total length (mm)	Box (pcs)	Art.nr.
● EG	3000	25	04-151-373300



## Nonius pin

**Description:**

Nonius pin galvanized.

**Application:**

Connecting vernier and upper parts.

Finish	Box (pcs)	Art.nr.
● EG	100	04-161-500



## Nonius nail

**Description:**

Nonius nail galvanized.

**Application:**

Connecting vernier and upper parts.

Finish	Total length (mm)	Thickness (mm)	Box (pcs)	Art.nr.
● EG	60	2,5	100	04-161-550



## Nonius pin

**Description:**

Nonius pin galvanized, double acting.

**Application:**

Connecting vernier and upper parts.

Finish	Box (pcs)	Art.nr.
● EG	100	04-161-600



# NONIUS CEILING SUSPENSION SYSTEM

## Nonius tops class C5

**Description:**

Nonius top galvanized, painted black, fully perforated, corrosion class C5.

**Application:**

Corrosion resistant suspension system for ceilings suitable for pools.



Finish	Curved length (mm)	Box (pcs)	Art.nr.
● EG/PT	85	50	04-265-117141*
● EG/PT	135	50	04-265-117142*
● EG/PT	235	50	04-265-117143*
● EG/PT	335	50	04-265-117144*
● EG/PT	435	50	04-265-117145*
● EG/PT	535	50	04-265-117146*
● EG/PT	635	50	04-265-117147*
● EG/PT	735	50	04-265-117148*
● EG/PT	835	50	04-265-117149*
● EG/PT	935	50	04-265-117150*
● EG/PT	1035	25	04-265-117151*
● EG/PT	1135	25	04-265-117152*
● EG/PT	1235	25	04-265-117153*
● EG/PT	1335	25	04-265-117154*
● EG/PT	1435	25	04-265-117155*
● EG/PT	1535	25	04-265-117156*
● EG/PT	1635	25	04-265-117157*
● EG/PT	1735	25	04-265-117158*
● EG/PT	1835	25	04-265-117159*
● EG/PT	1935	25	04-265-117160*
● EG/PT	2435	25	04-265-117165*

## Nonius base for timber class C5

**Description:**

Nonius base galvanized, painted black, corrosion class C5.

**Application:**

Anticorrosive hanging systems wooden rails and coves suitable for swimming pools.



Finish	Total length (mm)	Box (pcs)	Art.nr.
● EG/PT	190	100	04-265-117069*

## Nonius base for timber class C5

**Description:**

Nonius base galvanized, painted black, 90° inverted, corrosion class C5.

**Application:**

Anticorrosive hanging wooden rails and coves suitable for swimming pools.



Finish	Total length (mm)	Box (pcs)	Art.nr.
● EG/PT	170	100	04-265-117070*

\* Possible longer delivery time

## Nonius base for T-profile class C5

**Description:**

Nonius base galvanized, painted black, corrosion class C5.

**Application:**

Anticorrosive hanging T-profile suitable for pools.

Finish	Total length (mm)	Box (pcs)	Art.nr.
EG/PT	190	100	04-265-117077*



## Nonius rod class C5

**Description:**

Nonius connector galvanized, painted black, connecting an upper part with a vernier vernier rod, corrosion class C5.

**Application:**

Anticorrosive vernier connecting uppers with a straight vernier rod suitable for pools.

Finish	Total length (mm)	Box (pcs)	Art.nr.
EG/PT	90	100	04-265-117083*



## Nonius rod class C5

**Description:**

Vernier rod galvanized, painted black, fully perforated, maximum extension 3000 mm, corrosion class C5.

**Application:**

Corrosion extending vernier top suitable for pools.

Finish	Total length (mm)	Box (pcs)	Art.nr.
EG/PT	3000	25	04-265-117558*



## Nonius pin class C5

**Description:**

Nonius pin galvanized, painted black, corrosion class C5.

**Application:**

Anticorrosive vernier connecting tops and parts for pools.

Finish	Box (pcs)	Art.nr.
EG/PT	100	04-265-117180*



\* Possible longer delivery time

# NONIUS CEILING SUSPENSION SYSTEM

## Ceiling anchor class C4

**Description:**

Anchor, suitable for pools. ss 1.4529.

**Application:**

Anticorrosive vernier anchoring uppers in concrete for pools.



Finish	Drill Ø (mm)	Total length (mm)	Box (pcs)	Art.nr.
● SS	6	35	100	04-265-506035*

## Ceiling anchor installation tool class C4

**Description:**

Insertion pin attachment to the ceiling anchors in the concrete.

**Application:**

Insertion pin attachment for ceiling anchor class C4.



Finish	Box (pcs)	Art.nr.
● ME	1	04-265-506000*

## Aerosol serving C4

**Description:**

Aerosol 400 ml, black colour, for the treatment of damage on corrosion resistant components.

**Application:**

Correct damage to C4 material.



Capacity (ml)	Box (pcs)	Art.nr.
400	1	04-265-110302*

## Nonius base class C5

**Description:**

Nonius base galvanized, painted black, secured with screws, 40 kg with screws, 25 kg without screws, corrosion class C5.

**Application:**

Anticorrosive hanging CD60/27 profile suitable for pools.



Finish	Total length (mm)	Box (pcs)	Art.nr.
● EG/PT	70	100	04-265-110335*
● EG/PT	130	100	04-265-117198*

\* Possible longer delivery time

## CD60/27 profile class C5

**Description:**

CD60/27 trunking galvanized, painted black, corrosion class C5.

**Application:**

Corrosion CD60/27 trunking suitable for pools.



Finish	Total length (mm)	Box (pcs)	Art.nr.
EG/PT	4000	12	04-265-117281*

## UD28 edge profile class C5

**Description:**

UD28 edge profile galvanized, painted black, corrosion class C5.

**Application:**

Corrosion UD28 edge profile suitable for pools.



Finish	Total length (mm)	Box (pcs)	Art.nr.
EG/PT	3000	16	04-265-117302*

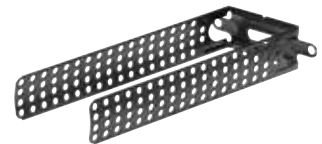
## Direct hanger for CD60/27 system class C5

**Description:**

Direct hanger galvanized, painted black, corrosion class C5.

**Application:**

Corrosiewerend ophangen van CD60/27 profiel geschikt voor zwembaden.



Finish	Total length (mm)	Box (pcs)	Art.nr.
EG/PT	125	100	04-265-117182*

## Cross-connector for CD60/27 class C5

**Description:**

Cross-connector galvanized, painted black, corrosion class C5.

**Application:**

Anticorrosive connecting CD60/27 profile suitable for pools.



Finish	Box (pcs)	Art.nr.
EG/PT	100	04-265-117004*

\* Possible longer delivery time



# NONIUS CEILING SUSPENSION SYSTEM

## Length connector for CD60/27 class C5

**Description:**

Length connector galvanized, painted black, corrosion class C5.

**Application:**

Corrosion extending CD60/27 profile suitable for pools.



Finish	Total length (mm)	Box (pcs)	Art.nr.
EG/PT	80	100	04-265-117016*

## Gypsum screw fine thread anti-corrosion

**Description:**

Gypsum screw fine thread, corrosion treated, suitable for pools.

**Application:**

Anti-corrosive for plaster on metal stud for pools.

1.440 hour salt spray test



Finish	Thickness (mm)	Total length (mm)	Box (pcs)	Art.nr.
EG/PT	3,9	35	1000	04-265-503935*
EG/PT	3,9	45	1000	04-265-503945*

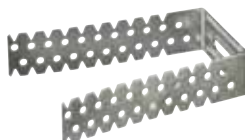
## Direct hanger for CD60/27 curved

**Description:**

Direct hanger galvanized.

**Application:**

Suspending CD60/27 profile.



Finish	Total length (mm)	Box (pcs)	Art.nr.
EG	65	100	04-201-407181
EG	125	100	04-201-407182

\* Possible longer delivery time

## Direct hanger for CD60/27 straight

**Description:**

Direct hanger galvanized.

**Application:**

Suspending CD60/27 profile.

Finish	Total length (mm)	Box (pcs)	Art.nr.
● EG	65	100	04-201-407235
● EG	125	100	04-201-407234
● EG	200	100	04-201-407236*



## Direct hanger for CD60/27

**Description:**

Direct hanger galvanized.

**Application:**

Suspending CD60/27 profile.

Finish	Total length (mm)	Box (pcs)	Art.nr.
● EG	75	100	04-201-407005*



## Direct hanger Click-fix for CD60/27

**Description:**

Direct hanger galvanized.

**Application:**

Ophangen van CD60/27 profiel.

Finish	Box (pcs)	Art.nr.
● EG	100	04-201-407008*



## Direct hanger for CD60/27

**Description:**

Direct hanger galvanized, adjustable.

**Application:**

Suspending CD60/27 profile.

Finish	Min/Max length (mm)	Box (pcs)	Art.nr.
● EG	40-70	50	04-201-407410*
● EG	59-108	50	04-201-407400*



\* Possible longer delivery time

# NONIUS CEILING SUSPENSION SYSTEM

## Anchor hanger for CD60/27

**Description:**

Anchor hanger zinc plated.

**Application:**

Suspending CD60/27 profile.



Finish	Total length (mm)	Box (pcs)	Art.nr.
● EG	90	100	04-201-407002
● EG	170	100	04-201-407024
● EG	270	100	04-201-407027

## Anchor hanger for CD60/27

**Description:**

Anchor pendant plated with a spring for 4 mm suspension wire.

**Application:**

Suspending CD60/27 profile.



Finish	Total length (mm)	Box (pcs)	Art.nr.
● EG	90	100	04-201-407003

## Anchor hanger for CD60/27

**Description:**

Anchor pendant plated, 90° angle.

**Application:**

Suspending CD60/27 profile.



Finish	Box (pcs)	Art.nr.
● EG	250	04-201-407011*

## Quick release clip for CD60/27

**Description:**

Keyless-plated clip with a spring for 4 mm suspension wire.

**Application:**

Suspending CD60/27 profile.



Finish	Total length (mm)	Box (pcs)	Art.nr.
● EG	113	100	04-201-407007*

\* Possible longer delivery time

## Mounting clip for CD60/27

**Description:**  
Clip galvanized.

**Application:**  
Suspending CD60/27 profile.

Finish	Box (pcs)	Art.nr.
● EG	100	04-201-507705*



## Distance bracket CD60/27

**Description:**  
Distance bracket galvanized.

**Application:**  
Suspending CD60/27 profile..

Finish	Total length (mm)	Box (pcs)	Art.nr.	
● EG	30	100	04-201-407175*	
● EG	45	100	04-201-407176*	
● EG	60	100	04-201-407177*	
● EG	90	100	04-201-407178*	
● EG	90	stretched out	100	04-201-407778*



## Direct hanger Click-fix for CD60/27 damper

**Description:**  
Direct hanger galvanized with integrated rubber shock absorber.

**Application:**  
Suspending CD60/27 profile.

Finish	Box (pcs)	Art.nr.
● EG	100	04-241-407023*



## Direct hanger for CD60/27 damper

**Description:**  
Direct hanger galvanized with integrated rubber shock absorber.

**Application:**  
Suspending CD60/27 profile.

Finish	Total length (mm)	Box (pcs)	Art.nr.
● EG	125	100	04-241-407183*



\* Possible longer delivery time

# NONIUS CEILING SUSPENSION SYSTEM

## Direct hanger for CD60/27 damper

**Description:**

Direct hanger galvanized with integrated rubber shock absorber.

**Application:**

Suspending CD60/27 profile.



Finish	Box (pcs)	Art.nr.
● EG	50	04-241-407401*

## Quick release clip for CD60/27 damper

**Description:**

Quick release clip galvanized, with a spring for 4mm suspension wire, with integrated rubber shock absorber.

**Application:**

Suspending CD60/27 profile.



Finish	Total length (mm)	Box (pcs)	Art.nr.
● EG	113	100	04-241-407006*

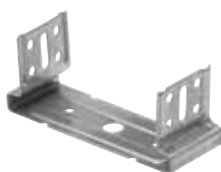
## Direct hanger for CW-UW 50 spring

**Description:**

Direct hanger galvanized, spring.

**Application:**

Suspending CW-50 profile.



Finish	Total length (mm)	Box (pcs)	Art.nr.
● EG	60	100	04-201-407186*
● EG	90	100	04-201-407187*

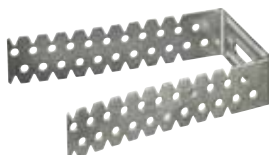
## Direct hanger for wooden curved lines

**Description:**

Direct hanger galvanized.

**Application:**

Hanging wooden rules.



Finish	Total length (mm)	Box (pcs)	Art.nr.
● EG	65	100	04-201-407179*
● EG	125	100	04-201-407180*

\* Possible longer delivery time

## Direct hanger for T-profile

**Description:**

Direct hanger galvanized.

**Application:**

Hanging T-profile.

Finish	Total length (mm)	Box (pcs)	Art.nr.
● EG	45	100	04-201-507240*
● EG	55	100	04-201-507241*



## Quick release clip with plate for wooden slats

**Description:**

Quick release clip countersink, 90 ° turned, with a spring for 4 mm suspension wire.

**Application:**

Hanging wooden slats.

Finish	Total length (mm)	Box (pcs)	Art.nr.
● EG	110	100	04-201-407043*



## Quick release clip with plate for wooden rules

**Description:**

Keyless-plated clip with a spring for 4 mm suspension wire.

**Application:**

Hanging wooden rules.

Finish	Total length (mm)	Box (pcs)	Art.nr.
● EG	85	100	04-201-407044*



## Quick release clip with plate for Hunter Douglas profile

**Description:**

Keyless-plated clip countersink.

**Application:**

Suspending Hunter Douglas Profile.

Finish	Total length (mm)	Box (pcs)	Art.nr.
● EG	80	100	04-201-407055*



\* Possible longer delivery time

# QUICK HANGER SYSTEM

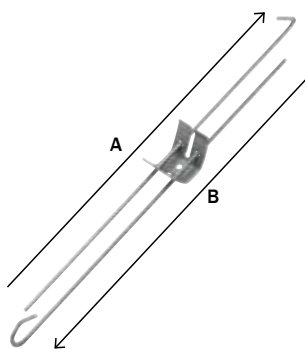
## System 2000 hook / special hook

### Description:

Direct hanger galvanized, with a hook on two sides, squeezing the hook is no longer necessary.

### Application:

For fixing of T-profile of ceiling suspension systems, etc. CD60/27.



Finish	Ø (mm)	A (mm)	B (mm)	Min (mm)	Max (mm)	Box (pcs)	Art.nr.
● EG	3,25	190	185	190	320	100	05-103-0150-BP
● EG	3,25	310	310	310	575	100	05-103-0300-BP
● EG	3,25	410	410	410	770	100	05-103-0400-BP*
● EG	3,25	510	510	510	970	100	05-103-0500-BP
● EG	3,25	1010	310	1010	1270	100	05-103-0600-BP
● EG	3,25	1010	510	1010	1470	100	05-103-0700-BP
● EG	3,25	1010	760	1010	1720	100	05-103-0800-BP
● EG	3,25	1010	1010	1010	1970	100	05-103-1000-BP

## Quick hanger systems

### Advantages:

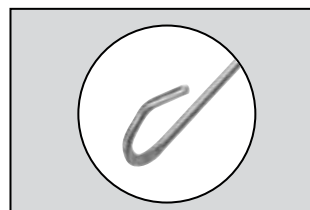
1

Exclusive design creates time saving, squeezing the hook is no longer necessary. Therefore there is no need to manually close the hook like the traditional quick hanger system.



2

Special hook design protects and prevents damage to the ceiling tile.



3

As strong as Ø 4.0 mm but lighter in weight.



\* Possible longer delivery time



## Hanger hook / hook

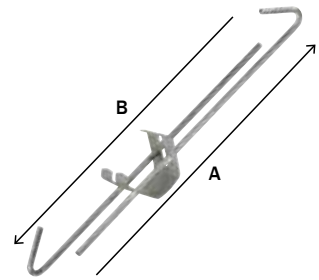
**Description:**

Hangers plated, with a hook on 2 sides.

**Application:**

Suspending including T-profile for suspended ceilings, etc. CD60/27.

Finish	Ø (mm)	A (mm)	B (mm)	Min (mm)	Max (mm)	Box (pcs)	Art.nr.
● EG	4	90	90	90	130	100	05-101-0090
● EG	4	115	115	115	180	100	05-101-0100
● EG	4	140	140	140	230	100	05-101-0125
● EG	4	165	165	165	280	100	05-101-0150
● EG	4	215	215	215	380	100	05-101-0200
● EG	4	315	315	315	380	100	05-101-0300
● EG	4	415	415	415	780	100	05-101-0400
● EG	4	515	515	515	980	100	05-101-0500
● EG	4	1015	315	1015	1280	100	05-101-0600
● EG	4	1015	515	1015	1480	100	05-101-0700
● EG	4	1015	815	1015	1780	100	05-101-0800
● EG	4	1015	1015	1015	1980	100	05-101-1000
● EG	4	315	215	315	480	100	05-101-20/030
● EG	4	415	315	415	680	100	05-101-30/040
● EG	4	515	315	515	780	100	05-101-30/050
● EG	4	750	315	750	1015	100	05-101-30/075
● EG	4	815	315	815	1080	100	05-101-30/080
● EG	4	1215	315	1215	1485	25	05-101-30/125
● EG	4	1515	315	1515	1780	25	05-101-30/150
● EG	4	1750	315	1750	2015	25	05-101-30/175
● EG	4	2015	315	2015	2280	25	05-101-30/200
● EG	4	2515	315	2515	2780	25	05-101-30/250
● EG	4	3015	315	3015	3280	25	05-101-30/300
● EG	4	1515	615	1515	2080	25	05-101-60/150
● EG	4	2015	615	2015	2580	25	05-101-60/200
● EG	4	2515	615	2515	3080	25	05-101-60/250
● EG	4	3015	615	3000	3580	25	05-101-60/300



## Hanger hook / eye

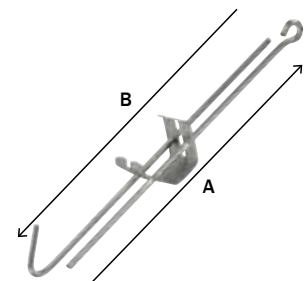
**Description:**

Hangers galvanized, a hook on one side and an eye on the other.

**Application:**

Suspending including T-profile for suspended ceilings, etc. CD60/27.

Finish	Ø (mm)	A (mm)	B (mm)	Min (mm)	Max (mm)	Box (pcs)	Art.nr.
● EG	4	165	165	165	280	100	05-102-0150*
● EG	4	215	215	215	380	100	05-102-0200*
● EG	4	315	315	315	580	100	05-102-0300*
● EG	4	415	415	415	780	100	05-102-0400*
● EG	4	515	515	515	980	100	05-102-0500*
● EG	4	315	1015	1015	1280	100	05-102-0600*
● EG	4	515	1015	1015	1480	100	05-102-0700*
● EG	4	815	1015	1015	1780	100	05-102-0800*
● EG	4	1015	1015	1015	1980	100	05-102-1000*



\* Possible longer delivery time

# QUICK HANGER SYSTEM

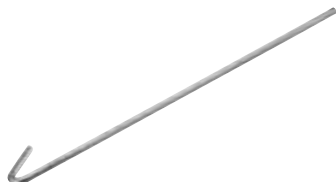
## Quick hanger wire with hook

### Description:

Loose single wire galvanized, 1 side a hook.

### Application:

Suspending including T-profile for suspended ceilings, etc. CD60/27.



Finish	Ø (mm)	Length (mm)	Box (pcs)	Art.nr.
● EG	4	115	100	05-111-0100
● EG	4	125	100	05-111-0110*
● EG	4	165	100	05-111-0150
● EG	4	215	100	05-111-0200
● EG	4	250	100	05-111-0250
● EG	4	315	100	05-111-0300
● EG	4	415	25	05-111-0400
● EG	4	515	100	05-111-0500
● EG	4	615	100	05-111-0600
● EG	4	715	100	05-111-0700
● EG	4	815	100	05-111-0800
● EG	4	915	100	05-111-0900
● EG	4	1015	100	05-111-1000
● EG	4	1115	100	05-111-1100*
● EG	4	1215	100	05-111-1200
● EG	4	1515	100	05-111-1500
● EG	4	2015	100	05-111-2000
● EG	4	2515	100	05-111-2500
● EG	4	3015	50	05-111-3000
● EG	4	4015	100	05-111-4000
● EG	4	5015	100	05-111-5000*

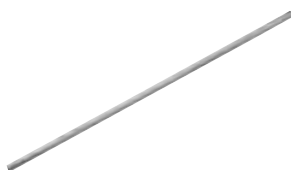
## Wire without hook

### Description:

Threaded rod galvanized, straight.

### Application:

Suspending including T-profile for suspended ceilings, etc. CD60/27.



Finish	Ø (mm)	Length (mm)	Box (pcs)	Art.nr.
● EG	4	1500	100	05-111-1500Z*
● EG	4	2000	100	05-111-2000Z*
● EG	4	2500	100	05-111-2500Z
● EG	4	3000	50	05-111-3000Z
● EG	4	3500	50	05-111-3500Z
● EG	4	4015	100	05-111-4000Z*
● EG	4	5015	100	05-111-5000Z*
● EG	4	6000	100	05-111-6000Z*

## Suspension wire with spring

### Description:

Single suspension wire with quick release spring galvanized, 1 side a hook.

### Application:

Suspending including T-profile for suspended ceilings, etc. CD60/27.



Finish	Ø (mm)	Length (mm)	Box (pcs)	Art.nr.
● EG/DT	4	215	100	05-101-50
● EG/DT	4	315	100	05-101-51

\* Possible longer delivery time

## Suspension wire with eye

**Description:**

Loose single wire galvanized, 1 side a hook.

**Application:**

Suspending including T-profile for suspended ceilings, etc. CD60/27.

Finish	Ø (mm)	Length (mm)	Box (pcs)	Art.nr.
● EG	4	115	100	05-112-0100*
● EG	4	125	100	05-112-0110*
● EG	4	165	100	05-112-0150*
● EG	4	215	100	05-112-0200
● EG	4	250	100	05-112-0250
● EG	4	315	100	05-112-0300
● EG	4	375	100	05-112-0375*
● EG	4	415	100	05-112-0400
● EG	4	515	100	05-112-0500
● EG	4	615	100	05-112-0600*
● EG	4	715	100	05-112-0700*
● EG	4	750	100	05-112-0750*
● EG	4	815	100	05-112-0800*
● EG	4	1015	100	05-112-1000
● EG	4	1215	100	05-112-1200*
● EG	4	1515	100	05-112-1500*
● EG	4	2015	100	05-112-2015*
● EG	4	3015	100	05-112-3000*
● EG	4	4015	100	05-112-4000*
● EG	4	4500	100	05-112-4500*
● EG	4	5000	100	05-112-5000*



## Keyless spring release

**Description:**

Keyless feathers 4 mm, Delta Tone.

**Application:**

Linking 2 strands of 4 mm.

Finish	Box (pcs)	Art.nr.
● DT	100	05-111-51V



## Toggle with open hook

**Description:**

Toggle with open hook.

**Application:**

For mounting hangers in plasterboard, stone mesh, hollow precast concrete parts.

Finish	Thread Ø (mm)	Length (mm)	Drill Ø (mm)	Box (pcs)	Art.nr.
● EG	M5	70	16	50	905070K



\* Possible longer delivery time

# QUICK HANGER SYSTEM

## Ceiling anchor

**Description:**

Ceiling anchor, black, with hole.

**Application:**

Ceiling anchor, pull-out value 40kg.



Finish	Drill Ø (mm)	Length (mm)	Box (pcs)	Art.nr.
● EG	8	40	100	06-119-
● EG	8	32	100	968032

## Raw plug nail

**Description:**

Ceiling wedge nail.

**Application:**

For the attachment of parts to concrete ceiling.  
ETA, part 6 - fire resistance: R120



Finish	Drill Ø (mm)	Length (mm)	Box (pcs)	Art.nr.
● EG	6	35	100	960640
● EG	6	65	100	960670

## Lo-den anchor

**Description:**

Hammer nail, steel, incl. plastic insertion pin.

**Application:**

For the mouting of the Lo-den anchor.



Finish	Drill Ø (mm)	Length (mm)	Box (pcs)	Art.nr.
● EG	6,5	63	50	51-740-LB060-1

## Lo-den anchor insertion pin

**Description:**

Insertion pin metal.

**Application:**

For the mouting of the Lo-den anchor.



Finish	Drill Ø (mm)	Length (mm)	Box (pcs)	Art.nr.
● ME	6,5	63	1	51-745-LB

## Ceiling anchor, steel, zinc plated

**Description:**

Ceiling anchors are suitable for installing lowered ceilings. Mounting in concrete.



Finish	Size (Ø) mm	Length (mm)	Drill Ø (mm)	Drilldepth Ø (mm)	Box (pcs)	Art.nr.
● EG	6	50	6	35	100	055660

## Subex nail

**Description:**

Metal hammer fixing nail.

**Application:**

For anchoring in concrete.

Finish	Drill Ø (mm)	Length (mm)	Box (pcs)	Art.nr.
● EG	6	20	100	51-809-620
● EG	6	30	100	51-809-630
● EG	6	40	100	51-809-640
● EG	6	50	100	51-809-650
● EG	6	65	100	51-809-665



## Expersion plug for eye bolts

**Description:**

Brass expansion plug, fitted eye bolt.

**Application:**

For anchoring in concrete.

Finish	Drill Ø (mm)	Length (mm)	Box (pcs)	Art.nr.
● ME	8	20x10/16	100	06-201-WACO



## Brass expansion plug

**Description:**

Brass expansion plug

**Application:**

For anchoring in concrete in combination with Screw eye or bolt.

Finish	Thread Ø (mm)	Drill Ø (mm)	Length (mm)	Box (pcs)	Art.nr.
● ME	M6	8	24	100	973006
● ME	M8	10	30	100	973008
● ME	M10	12	34	100	973010



## Insertion pin Placer

**Description:**

Insertion pin Placer.

**Application:**

Insertion pin Placer for eye bolts 40/16, securely holds eye bolts, for easy drive and installation.

Box (pcs)	Art.nr.
1	06-311-



# QUICK HANGER SYSTEM

## Screw eye with wood thread

**Description:**

Galvanized eye screw.

**Application:**

For mounting on wood or a plastic plug.



Finish	Eye Ø (mm)	Length (mm)	Box (pcs)	Art.nr.
● EG	14,0	30	100	06-311-3014
● EG	14,0	40	100	06-311-4014
● EG	16,0	40	100	06-311-4016
● EG	18,0	50	100	06-311-5018
● EG	20,0	60	100	06-311-6020

## Thread eye bolt

**Description:**

Galvanized eye screw.

**Application:**

For mounting on wood or a plastic plug.



Finish	Drill Ø (mm)	Length (mm)	Box (pcs)	Art.nr.
● EG	8,0	90	100	06-401-240

## Screw eye with metric thread

**Description:**

Screw galvanized, metric thread.

**Application:**

For mounting in brass plugs.



Finish	Eye Ø (mm)	Thread Ø (mm)	Length (mm)	Box (pcs)	Art.nr.
● EG	10,5	M6	20	100	06-341-6020
● EG	10,5	M6	30	100	06-341-6030*
● EG	10,5	M6	40	100	06-341-6040*
● EG	10,5	M6	50	100	06-341-6050*
● EG	10,5	M6	60	100	06-341-6060*
● EG	10,5	M6	80	100	06-341-6080
● EG	10,5	M6	100	100	06-341-6100
● EG	10,5	M6	150	100	06-341-6150
● EG	10,5	M8	30	100	06-341-8030*
● EG	10,5	M8	40	100	06-341-8040*
● EG	10,5	M8	50	100	06-341-8050*
● EG	10,5	M8	60	100	06-341-8060*
● EG	10,5	M8	80	50	06-341-8080*
● EG	10,5	M8	225	50	06-341-8225*

\* Possible longer delivery time

## S-hook

**Description:**

S-hook.

**Application:**

For hanging light objects on the ceiling.

Finish	Thread Ø (mm)	Length (mm)	Box (pcs)	Art.nr.
● EG	4	30	100	06-381-35*



## Binding wire

**Description:**

Galvanized wire.

**Application:**

Suspending systems including T-profile for ceilings and for plaster ceilings CD60/27.

Finish	Wire Ø (mm)	Length (mm)	Art.nr.
● EG	2	2500	07-121-2500
● EG	2	3000	07-121-3000
● EG	2,8	2500	07-131-2500
● EG	2,8	3000	07-131-3000



## Hanger vibration damping

**Description:**

Galvanized hanger with integrated rubber shock absorber.

**Application:**

Vibration damped suspension of T-profile ceilings and CD60/27 for plaster ceilings, directly or in combination with vernier or hanger.

Finish	Length (mm)	Box (pcs)	Art.nr.
● EG	45	100	07-201-00
● EG	35	100	07-201-05
● EG	70	100	07-201-051
● EG	200	100	07-201-052*
● EG	36	100	07-201-055*
● EG	72	100	07-201-057*



\* Possible longer delivery time



# QUICK HANGER SYSTEM

## Suspension band

**Description:**

Suspension Tape, continuously perforated, easy to bend with pliers or hand.

**Application:**

For hanging ceilings, installation of pipes, cables and hoses.



Finish	M1	Thickness (mm)	Length (mm)	Width (mm)	Art.nr.
● EG	10	0,75	10.000	12	07-201-12
● EG	10	0,75	10.000	17	07-201-17

## Suspension band

**Description:**

Suspension Tape plastic, continuously perforated, easy to bend with pliers or with the hand.

**Application:**

For hanging ceilings, installation of pipes, cables and hoses.



Finish	M1	Length (mm)	Width (mm)	Art.nr.
● PL	10	10.000	19	07-201-PVC19

## Flange hanger

**Description:**

Black steel flange clip.

**Application:**

For hanging ceilings by means of wire, S-hooks, chains etc.



Finish	Beam Thickness	Box (pcs)	Art.nr.
● BL	1,5-4	100	60-010-10000
● BL	4-10	100	60-010-10001
● BL	10-15	100	60-010-10003
● BL	15-20	100	60-010-10004

## Profile clamp

**Description:**

Profile clamp galvanized steel.

**Application:**

For hanging ceilings by means of wire, S-hooks, chains etc.

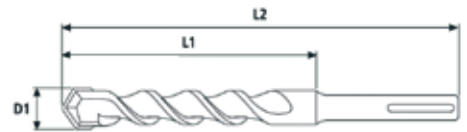


Finish	Drill Ø (mm)	Box (pcs)	Art.nr.
● EG	7	100	60-029-171470

## Hammer drills SDS 2+

### Legend

L1 = Effective length  
 L2 = Total length  
 D1 = Drill  
 D2 = Shaft diameter  
 2 cutter

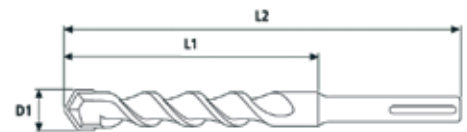


Finish		Dimensions			Box (pcs)	Art.nr.
		D1 mm	L1 mm	L2 mm		
●	PS	6	50	110	1	12306L0110
●	PS	8	50	110	1	12308L0110
●	PS	6	100	160	1	12306L0160
●	PS	8	100	160	1	12308L0160
●	PS	10	100	160	1	12310L0160
●	PS	12	100	160	1	12312L0160

## Hammer drills SDS 3+

### Legend

L1 = Effective length  
 L2 = Total length  
 D1 = Drill  
 D2 = Shaft diameter  
 3 cutter



Finish		Dimensions			Box (pcs)	Art.nr.
		D1 mm	L1 mm	L2 mm		
●	PS	6	50	110	1	93060110
●	PS	8	50	110	1	93080110
●	PS	6	100	160	1	93060160
●	PS	8	100	160	1	93080160
●	PS	10	100	160	1	93100160
●	PS	12	100	160	1	93120160

# CEILING AND WALL FIXINGS

## Beam clamp without thread

**Description:**

Steel galvanized, FM approved, making applicable to sprinkler systems installation.

**Application:**

To attach ductwork and piping to steel beams.



Finish	Flange thickness	Hole Ø (mm)	Box (pcs)	Art.nr.
● EG	19	7	50	60-120-TK06*
● EG	19	9	50	60-120-TK08*
● EG	19	11	50	60-120-TK10*
● EG	19	13	50	60-120-TK12*

## Beam clamp with metric thread

**Description:**

Steel galvanized, FM approved, making applicable to sprinkler systems installation.

**Application:**

To attach ductwork and piping to steel beams.



Finish	Thread	Box (pcs)	Art.nr.
● EG	M6	50	60-130-TKM06*
● EG	M8	50	60-130-TKM08*
● EG	M10	50	60-130-TKM10*
● EG	M12	50	60-130-TKM12*

## Mounting rail

**Description:**

Galvanized mounting rail.

**Application:**

Assembly rails for the mounting of slide nuts.



Finish	Length M1	Width (mm)	Height (mm)	Material thickness (mm)	Box (pcs)	Art.nr.
● EG	2	30	15	1,5	10	07-211-W15
● EG	2	30	15	2	10	07-211-W20
● EG	2	34	20	2,2	10	07-211-W22

## Sliding nuts

**Description:**

Sliding nuts galvanized.

**Application:**

For mounting in assembly rail W15 to W22, for fastening of threaded rod.



Finish	Thread	Box (pcs)	Art.nr.
● EG	M6	100	07-211-2006
● EG	M8	100	07-211-2008
● EG	M10	100	07-211-2010*
● EG	M12	100	07-211-2012*

\* Possible longer delivery time

## Toggle bolt

**Description:**

Galvanized slide bolt.

**Application:**

For mounting with assembly rail W15 to W22.



Finish	Length	Wire Ø (mm)	Box (pcs)	Art.nr.
● EG	20	M6	100	07-211-3006*
● EG	20	M8	100	07-211-3008*
● EG	20	M10	100	07-211-3010*

## Corner mounting bracket with fixing

**Description:**

Mounting bracket galvanized, including dowels to mount CD-UA50 profile.

**Application:**

Locking system in metal stud wall.



Finish	For mounting	Box (pcs)	Art.nr.
● EG	CD-UA50	4	04-201-507230*
● EG	CD-UA75	4	04-201-507231*
● EG	CD-UA100	4	04-201-507232*

## Corner mounting bracket without fixing

**Description:**

Mounting bracket galvanized.

**Application:**

Locking systems for metal stud wall.



Finish	For mounting	Box (pcs)	Art.nr.
● EG	CD-UA50	50	04-201-507235*
● EG	CD-UA75	25	04-201-507236*
● EG	CD-UA100	25	04-201-507237*

## Seat angle including assembly

**Description:**

Angle bracket galvanized, with a countersunk screw M8x20, washer and nut.

**Application:**

Locking systems for metal stud wall.



Finish	E.G	Box (pcs)	Art.nr.
● EG	UA50	4	04-201-507233*
● EG	UA75-100	4	04-201-507234*

\* Possible longer delivery time

# CEILING AND WALL FIXINGS

## Angle bracket excluding assembly

**Description:**

Galvanized angle bracket.

**Application:**

Locking door system in metal stud wall.



Finish	For mounting	Box (pcs)	Art.nr.
● EG	UA50	100	04-201-407096*
● EG	UA75-100	100	04-201-407098*

## Cross-connector for CD60/27

**Description:**

Galvanized cross-connector.

**Application:**

Connecting CD60/27 profile.



Finish	Specification	Box (pcs)	Art.nr.
● EG	Universal	100	04-201-407404
● EG	Tolerance	100	04-201-407004

## Cross-connector for CD60/27

**Description:**

Galvanized mounting rail.

**Application:**

For the fitting of installations.



Finish	Specification	Box (pcs)	Art.nr.
● EG	Rigid	100	04-201-407063

## Folding cross-connector for CD60/27 straight

**Description:**

Folding cross linker galvanized.

**Application:**

Connecting CD60/27 profile.



Finish	Box (pcs)	Art.nr.
● EG	100	04-201-407444*

\* Possible longer delivery time

## Length connecting bracket for CD60/27

**Description:**

Galvanized connecting bracket.

**Application:**

Extending CD60/27 profile.

Finish	Box (pcs)	Art.nr.
● EG	100	04-201-407016



## Wall connector for CD60/27

**Description:**

Mounting bracket galvanized, including dowels for a CD-UA50 profile.

**Application:**

Locking system for metal stud wall.

Finish	Box (pcs)	Art.nr.
● EG	100	04-201-407114*



## Cross connector for CD60/27

**Description:**

Cross connector galvanized.

**Application:**

Cross-linking of CD60/27 profile.

Finish	Box (pcs)	Art.nr.
● EG	100	04-201-407119*
● EG	100	04-201-507702*



## Length connector 100 mm

**Description:**

Length connector galvanized.

**Application:**

Length connector for grid linking 100 mm.

Finish	Box (pcs)	Art.nr.
● EG	100	04-201-407032



\* Possible longer delivery time

# CEILING AND WALL FIXINGS

## Wall connector 100 mm

**Description:**

Wall connector galvanized.

**Application:**

Wall connector for grid 100 mm.



Finish	Box (pcs)	Art.nr.
● EG	100	04-201-407112

## Cross connector 100 mm

**Description:**

Cross connector galvanized.

**Application:**

Cross connector for linking grids 100 mm.



Finish	Box (pcs)	Art.nr.
● EG	100	04-201-407117





# INSPECTION HATCHES

## Metal inspection hatches for ceilings / walls, Type SL

**Description:**

Metal inspection hatches for installation in ceilings or walls smooth.

**Application:**

Inspection hatches for ceilings, partitions and shaft walls.



Length (mm)	Width (mm)	Box (pcs)	Art.nr.
200	200	1	04-501-PW20/M*
300	300	1	04-501-PW30/M*
400	400	1	04-501-PW40/M*
500	500	1	04-501-PW50/M*
600	600	1	04-501-PW60/M*
800	800	1	04-501-PW80/M*

## Inspection hatches for smooth ceilings / walls, Type AS

**Description:**

Inspection hatches with aluminium edge, smooth ceilings and (cross) walls.

**Application:**

Inspection hatches for ceilings, partitions and shaft walls.



Length (mm)	Width (mm)	Thickness plasterboard (mm)	Box (pcs)	Art.nr.
200	200	1x12,5	1	04-601-PW20/G12*
300	300	1x12,5	1	04-601-PW30/G12
400	400	1x12,5	1	04-601-PW40/G12
500	500	1x12,5	1	04-601-PW50/G12
600	600	1x12,5	1	04-601-PW60/G12

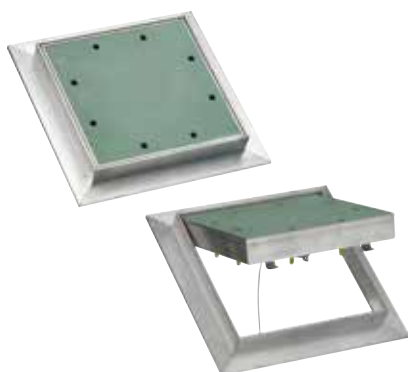
## Inspection hatches for smooth ceilings / walls, Type AS

**Description:**

Inspection hatches with aluminium edge, smooth ceilings and (cross) walls.

**Application:**

Inspection hatches for ceilings, partitions and shaft walls.



Length (mm)	Width (mm)	Thickness plasterboard (mm)	Box (pcs)	Art.nr.
200	200	2x12,5	1	04-601-PW20/G25*
300	300	2x12,5	1	04-601-PW30/G25
400	400	2x12,5	1	04-601-PW40/G25
500	500	2x12,5	1	04-601-PW50/G25
600	600	2x12,5	1	04-601-PW60/G25

\* Possible longer delivery time

## Inspection hatches for smooth partitions, Type AS

**Description:**

Inspection hatches with aluminium edge, for smooth partitions.

**Application:**

Fireproof inspection hatches for partitions.

Length (mm)	Width (mm)	Thickness plasterboard (mm)	Box (pcs)	Art.nr.
300	300	2x12,5	1	04-701-W30/G25F*
400	400	2x12,5	1	04-701-W40/G25F*
500	500	2x12,5	1	04-701-W50/G25F*
600	600	2x12,5	1	04-701-W60/G25F*



## Inspection hatches for smooth shaft walls, FS

**Description:**

Inspection covers with a metal edge for smooth shaft walls.

**Application:**

Fireproof inspection hatches for shaft walls.

Length (mm)	Width (mm)	Thickness plasterboard (mm)	Box (pcs)	Art.nr.
300	300	2x25	1	04-701-S30/G50F*
400	400	2x25	1	04-701-S40/G50F*
500	500	2x25	1	04-701-S50/G50F*
600	600	2x25	1	04-701-S60/G50F*



## Inspection hatches for smooth ceilings, Type FS

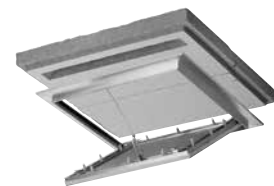
**Description:**

Inspection covers with a metal edge for smooth ceilings.

**Application:**

Fire inspection hatches for ceilings.

Length (mm)	Width (mm)	Thickness plasterboard (mm)	Box (pcs)	Art.nr.
300	300	2x20	1	04-701-P30/G40F*
400	400	2x20	1	04-701-P40/G40F*
500	500	2x20	1	04-701-P50/G40F*
600	600	2x20	1	04-701-P60/G40F*



\* Possible longer delivery time

## Hold down clip

**Description:**  
Retaining clip.

**Application:**  
For clamping of ceiling panels.



Finish	Plate thickness (mm)	Box (pcs)	Art.nr.
● EG	6-20	500	07-201-AH2
● EG	6-12	500	07-201-AH46*
● EG	6-12	500	07-201-AH47*
● SS	9-12	500	07-201-AH50*
● SS	9-16	500	07-201-AH51
● SS/PT	3-19	500	07-201-AH59*

## Wall spring clip

**Description:**  
Wall spring black.

**Application:**  
Fixing of ceiling panels into the suspended ceiling frame system.



Finish	Box (pcs)	Art.nr.
● EG	100	07-201-AH7

\* Possible longer delivery time

## Twist clip hanger with eye

**Description:**

Twist clip hanger with eye, galvanized steel, for 24 mm ceiling system.

**Application:**

For hanging light objects on the ceiling.

Finish	Box (pcs)	Art.nr.
● EG	100	60-030-210000



## Twist clip hanger with eye

**Description:**

Twist clip hanger with eye, galvanized steel, for 24 mm ceiling system.

**Application:**

For hanging light objects on the ceiling.

Finish	Box (pcs)	Art.nr.
● EG	100	60-030-210010*



## Twist clip hanger with eye

**Description:**

Twist clip hanger with eye, galvanized steel, for 24 mm ceiling system.

**Application:**

For hanging light objects on the ceiling.

Finish	Box (pcs)	Art.nr.
● EG/PT	100	60-030-210016



## Hanging bracket

**Description:**

Hanging bracket, stainless steel, with an eye, for a 24 mm system ceiling.

**Application:**

For hanging light objects on the ceiling.

Finish	Box (pcs)	Art.nr.
● SS	100	07-201-04



\* Possible longer delivery time

## Fibre cloth

**Description:**

Fibre cloth, non wove.

**Application:**

For wooden or metalceilings.



Finish	Colours	Width (mm)	Length (m1)	Material thickness (mm)	Roll	Art.nr.
● BL	Black	1300	100	0,28	1	07-230-zwart
● BL	White	1300	100	0,28	1	07-230-wit*
● BL	Grey	1300	100	0,28	1	07-230-grijs*

## Erdi Snips

**Description:**

Snips.

**Application:**

For cutting of ceiling and wall systems.



Finish	Type	Length (mm)	Box (pcs)	Art.nr.
● ME	Left handed	260	1	01-000-0000
● ME	Right handed	260	1	01-000-0001

## Wiss Snips

**Description:**

Snips.

**Application:**

For cutting of ceiling and wall systems.



Finish	Type	Box (pcs)	Art.nr.
● ME	Left handed	1	01-000-04205
● ME	Right handed	1	01-000-04207
● ME	Straight	1	01-000-04250

## Crimper pliers

**Description:**

Crimper plier for metal stud profiles.

**Application:**

Fixing of metal stud profile.



Finish	Box (pcs)	Art.nr.
● ME	1	15-550-2

\* Possible longer delivery time

## A

Aerosol serving C4	14
Anchor hanger for CD60/27	18
Angle bracket excluding assembly	34

## B

Beam clamp with metric thread	32
Beam clamp without thread	32
Binding wire	29
Bras expansion plug	27

## C

CD60/27 profile class C5	15
Ceiling anchor	26
Ceiling anchor class C4	14
Ceiling anchor, steel, zinc plated	26
Ceiling anchor installation tool class C4	14
Corner mounting bracket with fixing	33
Corner mounting bracket without fixing	33
Crimper pliers	42
Cross-connector for CD60/27	34 - 35
Cross-connector for CD60/27 class C5	15
Cross-connector 100mm	36

## D

Direct hanger Click-fix for CD60/27	17
Direct hanger Click-fix for CD60/27 damper	19
Direct hanger for CD60/27	17
Direct hanger for CD60/27 curved	16
Direct hanger for CD60/27 damper	19-20
Direct hanger for CD60/27 straight	17
Direct hanger for CD60/27 system class C5	15
Direct hanger for CW-UW 50 spring	20
Direct hanger for T-profile	21
Direct hanger for wooden curved lines	20
Distance bracket CD60/27	19

## E

Erdi snips	42
Expersionplug for eye bolts	27

## F

Fibre cloth	42
Folding cross-connector for CD60/27 straight	34

## G

Gypsum screw fine thread anti corrosion	16
---	----

## H

Hammer drills SDS+	31
Hanger bracket	41
Hanger hook / eye	23
Hanger hook / hook	23
Hanger vibration damping	29

## I

Insertion pin Placer	27
Inspection hatches	38 - 39

## K

Keyless spring release	25
------------------------	----

## L

Lenght connector for CD60/27	35
Lenght connector for CD60/27 class C5	16
Lenght connector 100mm	35
Lo-den anchor	26
Lo-den anchor insertion pin	

## M

Mounting clip for CD60/27	19
Mounting rail	32

## N

Nonius connector	10
Nonius base class 5	14
Nonius base for grids	7
Nonius base for CD60/27	8 - 9 - 10
Nonius base for clamping profile	9
Nonius extension	10
Nonius base for timber class C5	12
Nonius base for T-profile	9
Nonius base for T-profile class C5	13
Nonius base for T-sections	7
Nonius base for wood	8
Nonius nail	11
Nonius pin	11
Nonius pin class C5	13
Nonius rod	11
Nonius rod class C5	13
Nonius top class C5	12
Nonius top parts	6
Nonius tops with vibration damper	7

## Q

Quick hanger wire with hook	24
Quick release clip for CD60/27	18
Quick release clip for CD60/27 damper	20
Quick release clip with plate for Hunter Douglas profile	21
Quick release clip with plate for wooden rules	21
Quick release clip with plate for wooden slats	21

## R

Raw plug nail	26
---------------	----

## S

Screw eye with metric thread	28
Screw eye with wood thread	28
SDS+ hammer drills	31
Seat angle including assembly	33
Sliding nuts	32
Snips	42
Subex nail	27
Suspension wire with eye	25
Suspension wire with spring	24
System 2000 hook / special hook	22
S-Hook	29

**Verpa Senco B.V.**  
Pascallaan 88,  
8218 NJ Lelystad,  
The Netherlands.

© Copyright Verpa Senco B.V. 2017  
rights reserved, no rights may be  
derived from the information in this  
publication.

Subject to misprints.

